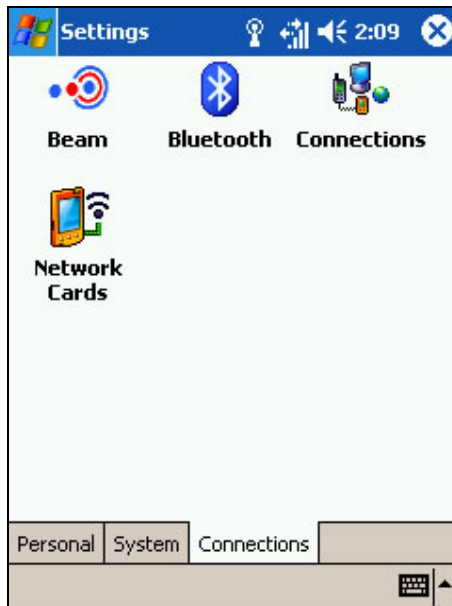


## Internet

### How to connect to the Internet



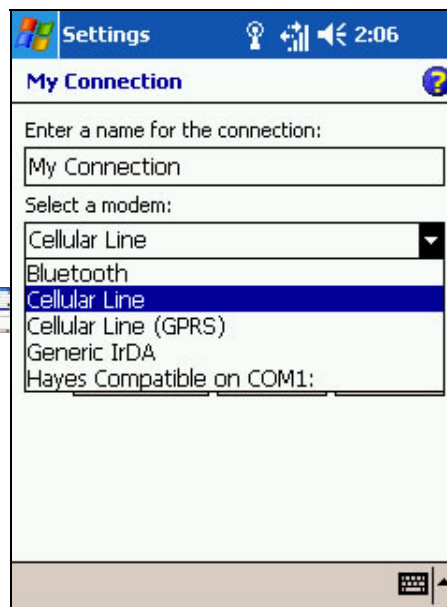
1. Obtain the following information from your ISP: ISP server phone number, user name, and password.



2. Tap Start > Settings > Connections tab > Connections.



3. In My ISP, tap Add a new modem connection.

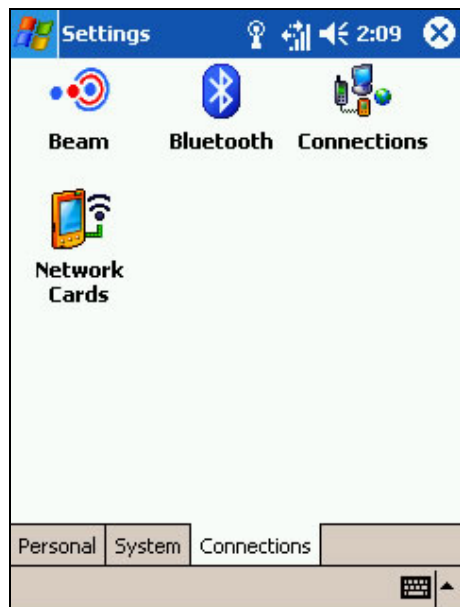


4. Create a modem connection.

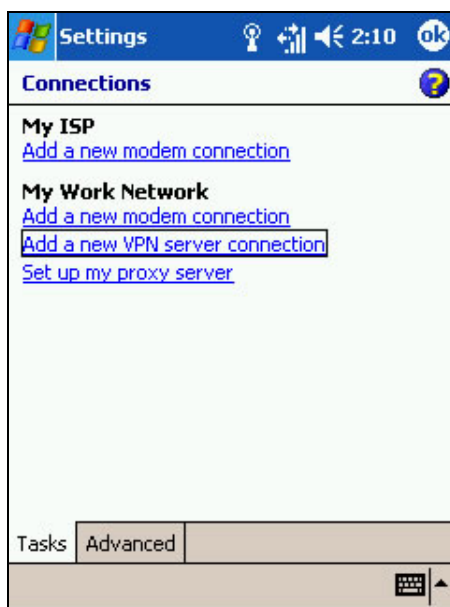
**Tip:** To set up a network card or wireless network connection to your ISP, add a new connection under My Work Network.

## Internet:

### How to connect to work



1. Obtain the following information from your network administrator: server phone number, user name, and password.



2. Tap Start > Settings > Connections tab > Connections.

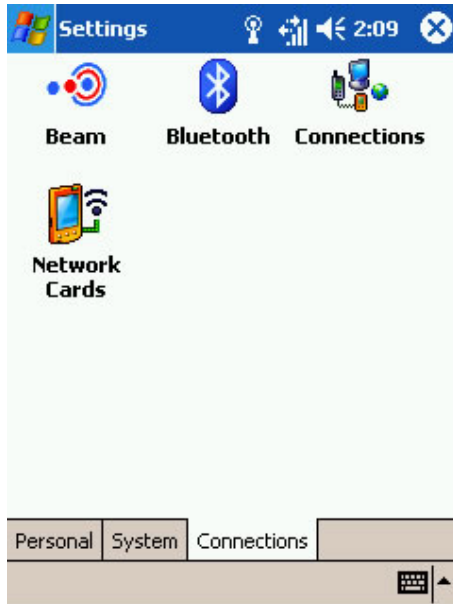


3. In My Work Network, set up a modem, network card, wireless network, or VPN server connection.

## Internet:

### How to set up modem connections

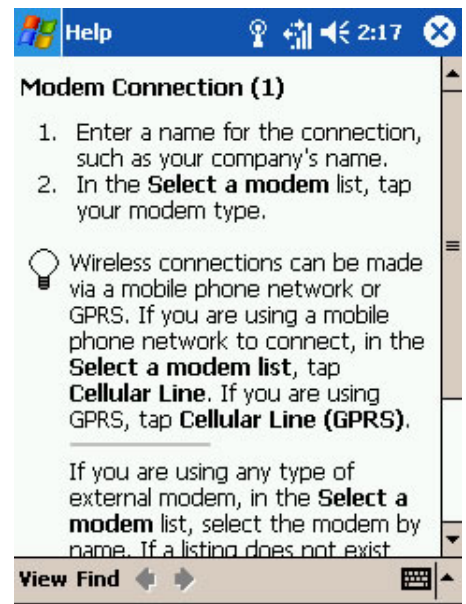
Obtain the following information from your ISP or network administrator: telephone number, user name, password, domain name, and TCP/IP settings. If your device does not have access to a mobile phone network, insert a modem card.



1. Tap Start > Settings > Connections tab > Connections.



2. To create a new connection, in either My ISP or My Work Network, tap Add a new modem connection, and follow the instructions in the New Connection wizard.



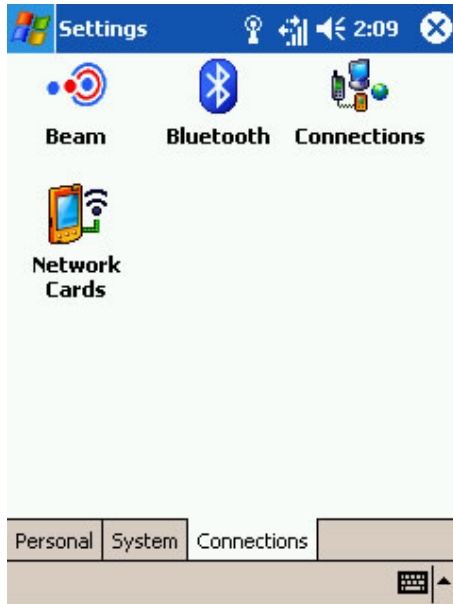
3. To view additional information for any screen in the wizard or while changing settings, tap Help.

**Tip:** To change modem connection settings, in either My ISP or My Work Network, tap Manage existing connections. Select the desired modem connection, tap Settings, and follow the instructions on the screen.

## Internet:

### How to set up VPN server connections

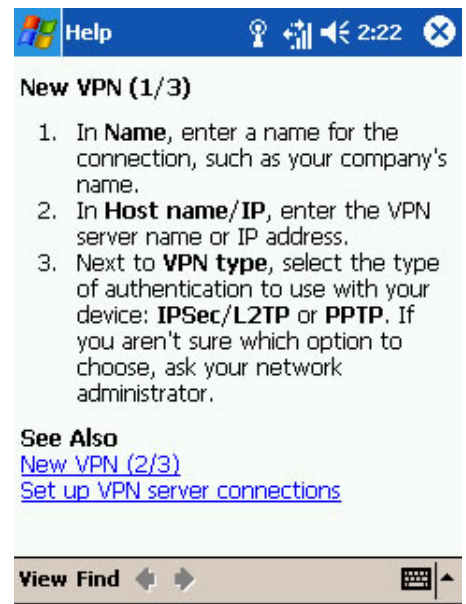
A VPN connection helps you to securely connect to servers, such as a corporate network, via the Internet. Ask your network administrator for your user name, password, domain name, TCP/IP settings, and host name or IP address of the VPN server.



1. Tap Start > Settings > Connections tab > Connections.



2. To create a new VPN server connection, in My Work Network, tap Add a new VPN server connection and follow the instructions in the New Connection wizard.



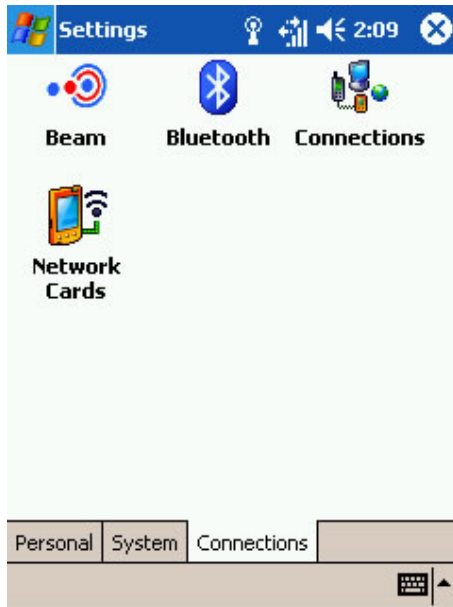
3. To view additional information for any screen in the wizard or while changing settings, tap Help.

**Tip:** To change existing settings, in My Work Network, tap Manage existing connections > VPN tab. Select the desired VPN connection, tap Settings, and follow the instructions on the screen.

## Internet:

### How to set up proxy server settings

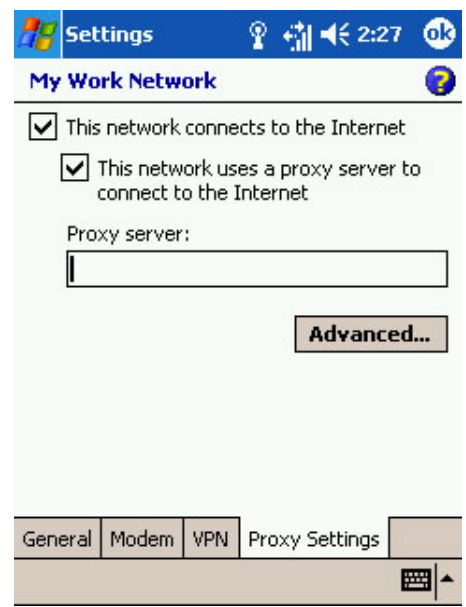
If you are connected to your ISP or private network during synchronization, your mobile device should download proper proxy settings during synchronization from your PC. If these settings are not on your PC or need to be changed, ask your ISP or network administrator for the proxy server name, server type, port, type of Socks protocol used, and your user name and password.



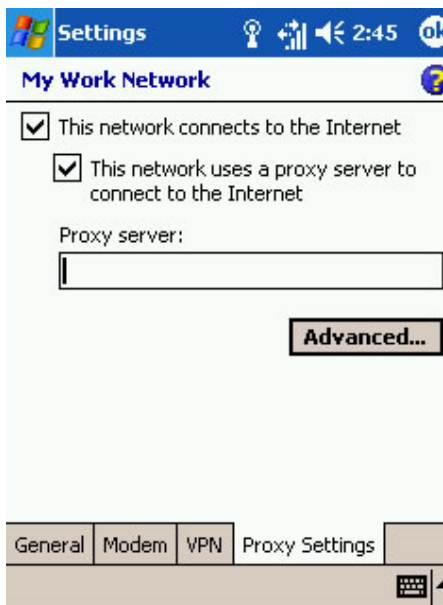
1. Tap Start > Settings > Connections tab > Connections.



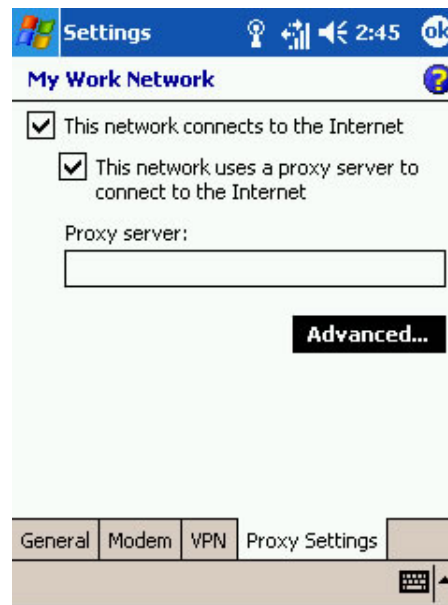
2. To create a new connection, in My Work Network, tap Edit my proxy server. If a proxy server has already been setup, tap Edit my proxy server to change proxy server settings. Select the desired proxy server, and tap Settings.



3. Select This network connects to the Internet and This network uses a proxy server to connect to the Internet.



4. In the Proxy server box, enter the proxy server name. In the Proxy server box, enter the proxy server name.



5. To change such settings as port number or proxy server type, tap Advanced and change desired settings.

## **Internet:**

### **How to configure advanced proxy settings**

(screenshots not available)

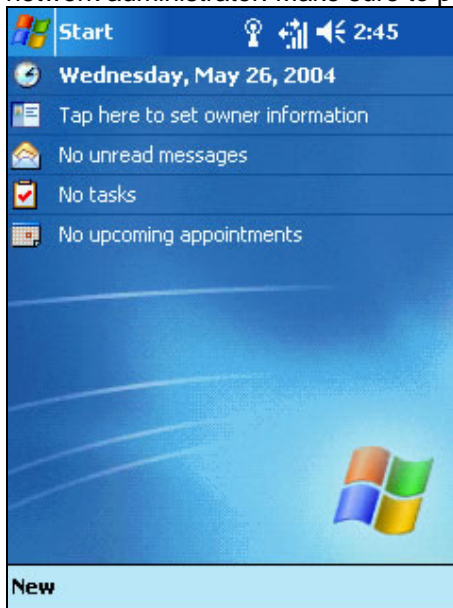
1. For the appropriate server type, enter the proxy server name and port. For the appropriate server type, enter the proxy server name and port.
2. Select Socks 4 or Socks 5. Select Socks 4 or Socks 5.
3. If using Socks 5, tap Socks 5 ID, and enter the user name and password.



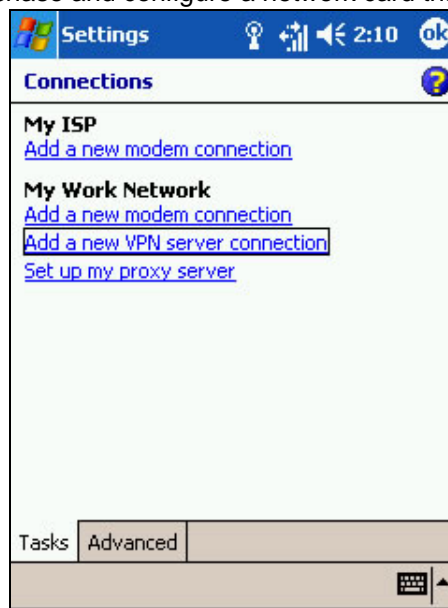
## Internet:

### How to set up a network card

Use a network (Ethernet) card to connect directly to a network. Once connected, you can view the Internet or intranet, or download e-mail. You do not need to create a new connection on your device. For more information, see your network administrator. Make sure to purchase and configure a network card that is compatible with your device.



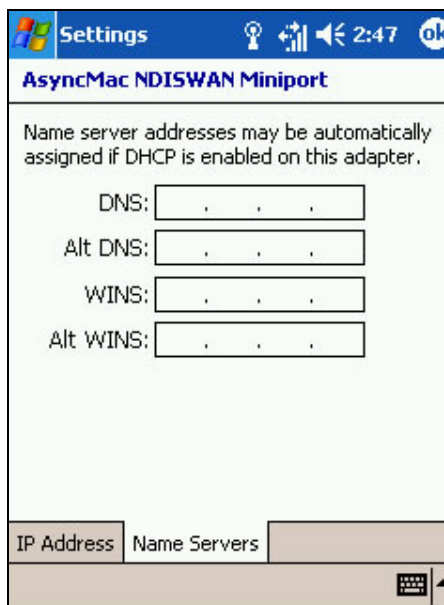
1. Insert the network card into your device.



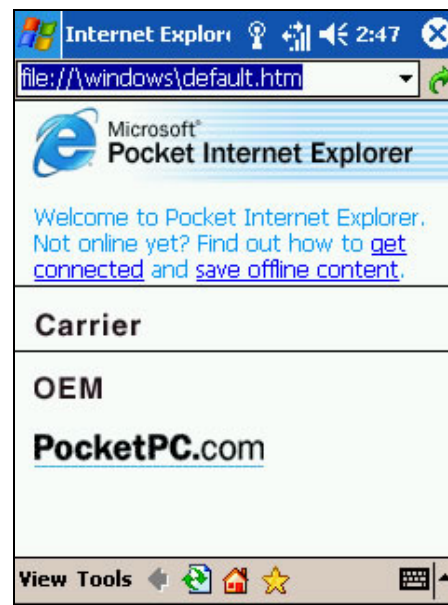
2. The first time you insert the card, Network Settings will appear automatically so that you can configure the network card. If it does not appear, or to change settings later, tap Start > Settings > Connections tab > Network Cards.



3. If you need to enter specific server information, tap the appropriate adapter, and then tap Name Servers. Most networks use DHCP, so you should not have to change these settings unless your network administrator instructs you to do so.



4. If necessary, connect the network card to the network by using a network cable. For information, see the documentation that came with your network card.



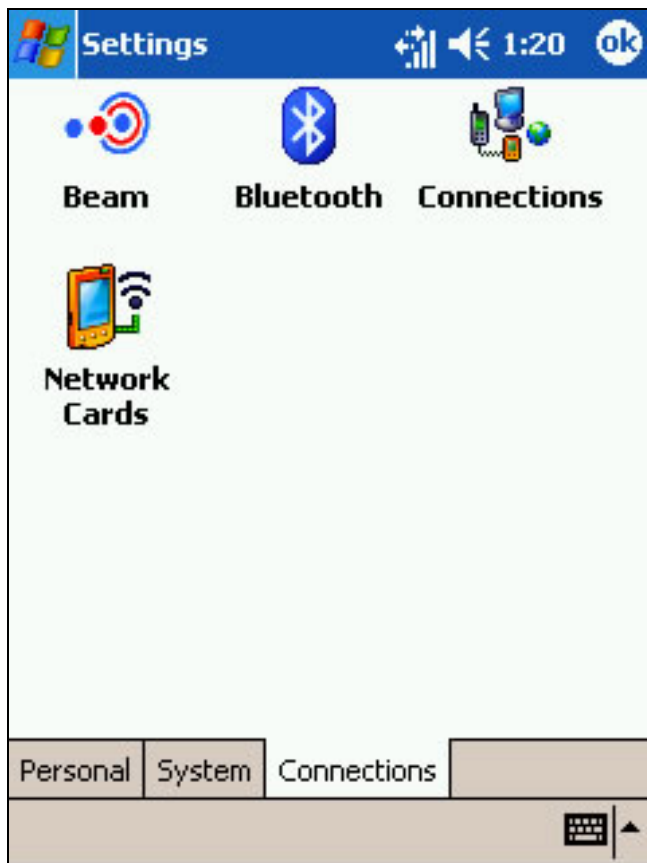
5. To start a connection, insert the network card, and begin using a desired program. For example, switch to Pocket Internet Explorer and browse to a Web page. Your device will automatically begin connecting.

**Tip:** If you use your network card with two networks, such as a private network at work and one at home for the Internet, you will need to change the network to which the network card connects. You may need proxy server and VPN connection settings. For more information, see your network administrator.

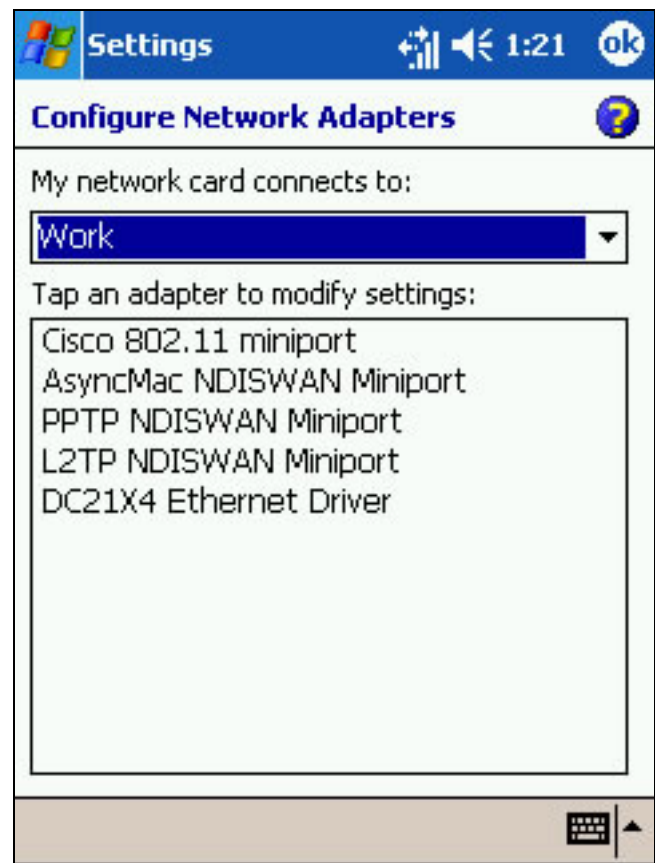
## Internet:

### How to change network card settings

If you use your network card in two locations, such as work and home, you must also change the network to which the network card connects.



1. Tap Start > Settings > Connections tab > Network Cards.



2. In the My network card connects to list, select The Internet or Work. When connecting to a private network, such as a corporate network at work, you should select Work. When connecting to your ISP at home, you should select The Internet. In the My network card connects to list, select The Internet or Work. When connecting to a private network, such as a corporate network at work, you should select Work. When connecting to your ISP at home, you should select The Internet.



## Internet:

### How to set up a wireless network

Networks that you have already configured are preferred networks and are listed under Wireless networks. You can select to connect to only preferred networks or have your device search for and connect to any available network whether it is preferred or not.

(screenshots not available)

1. Tap Start > Settings > Connections tab > Connections > Advanced tab > Network Card > Wireless tab.
2. To change network settings, in Wireless networks, tap a network. If you do not see a desired network, tap Add New Settings and follow the instructions on the screen.
3. From Networks to access, select All available, Only access points or Only computer-to-computer depending on the type of network(s) you connect to. To connect only to networks you have already configured, clear the Automatically connect to non-preferred networks check box.

**Tip:** If you select to automatically connect to non-preferred networks, your device will detect any new networks and provide you with the opportunity to configure them.

## **Internet:**

### **How to enter new wireless network settings**

A wireless network can be added either when the network is detected, or manually by entering settings information.

(screenshots not available)

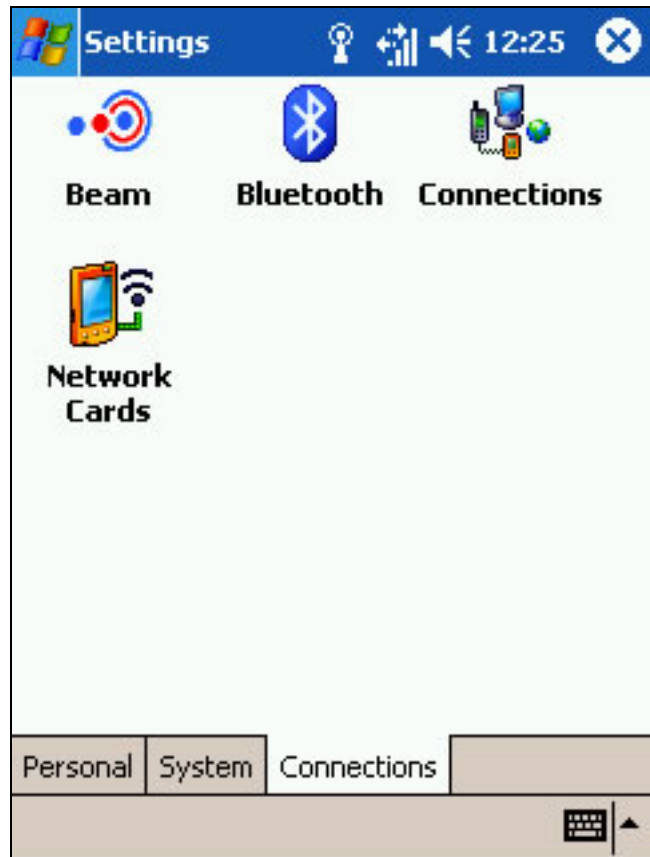
1. To manually enter information, tap Start > Settings > Connections tab > Connections > Advanced tab > Network Card > Wireless tab. Then, tap Add New Settings. If the network was detected, step one is not necessary.
2. In the General tab, enter a network name. If the network was detected, the network name is automatically entered and can't be changed.
3. From Connects to, select what your network connects to, Work or the Internet. To connect to an ad-hoc connection, select This is a device-to-device (ad-hoc) connection.

## Internet:

### How to configure authentication settings

A wireless network can be added either when the network is detected, or manually by entering settings information. To determine if authentication information is needed, see your network administrator.

1. To manually enter information, tap Start > Settings > Connections tab.
2. Tap Connections > Advanced tab > Network Card > Wireless tab.
3. In Wireless networks, select the network you want to configure.
4. To use authentication, tap the Network Key tab and select the authentication method from the Authentication list.
5. To use data encryption, select an encryption method from the Data encryption list.
6. To automatically use a network key, tap The key is automatically provided. Otherwise, enter the network key.

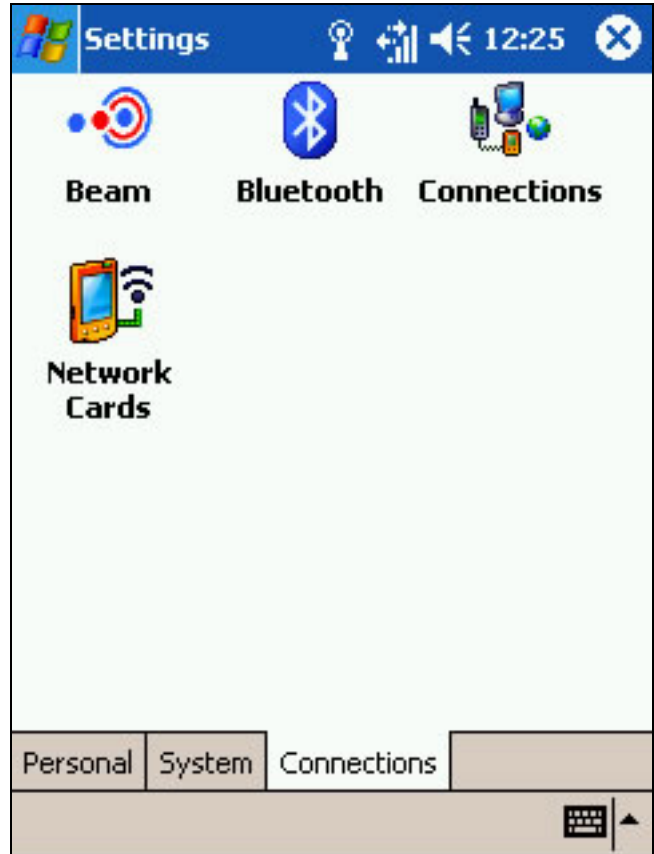


## Internet:

### How to configure 802.1x authentication settings

To determine if authentication information is needed, see your network administrator.

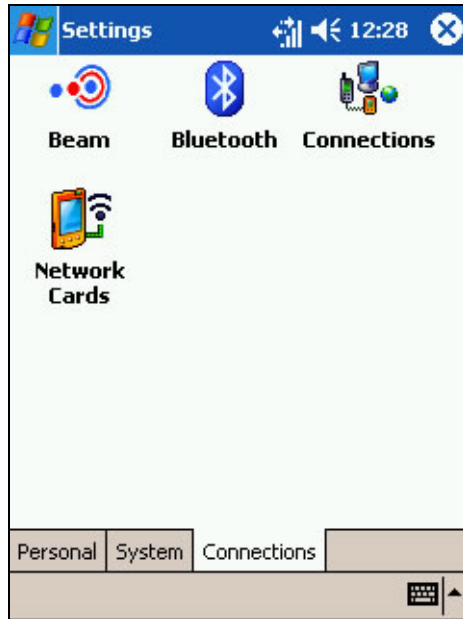
1. To manually enter information, tap Start > Settings > Connections tab. To manually enter information, tap Start > Settings > Connections tab.
2. Tap Connections > Advanced tab > Network Card > Wireless tab. Tap Connections > Advanced tab > Network Card > Wireless tab.
3. In Wireless networks, select the network you want to configure. In Wireless networks, select the network you want to configure.
4. For increased security, tap 802.1x tab > Use IEEE 802.1x network access control. Then, select the appropriate EAP type. For increased security, tap 802.1x tab > Use IEEE 802.1x network access control. Then, select the appropriate EAP type.



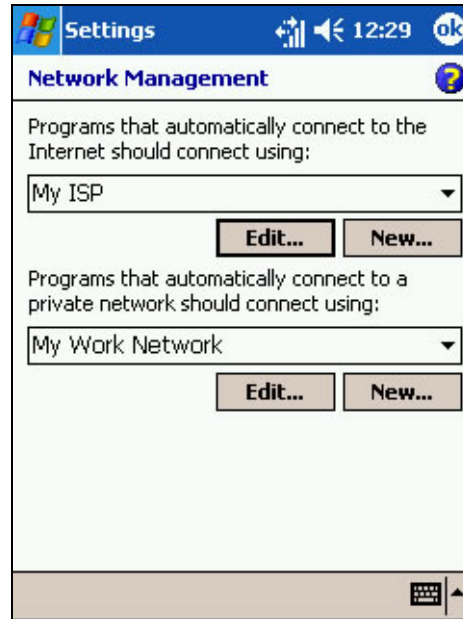
## Internet:

### How to change connection settings name

Your mobile device is already set up with two sets of connection settings: My ISP and My Work Network. You can change the name of these settings to something more familiar. For example, if you put all of your corporate settings under My Work Network, you can change the name from My Work Network to your company's name.



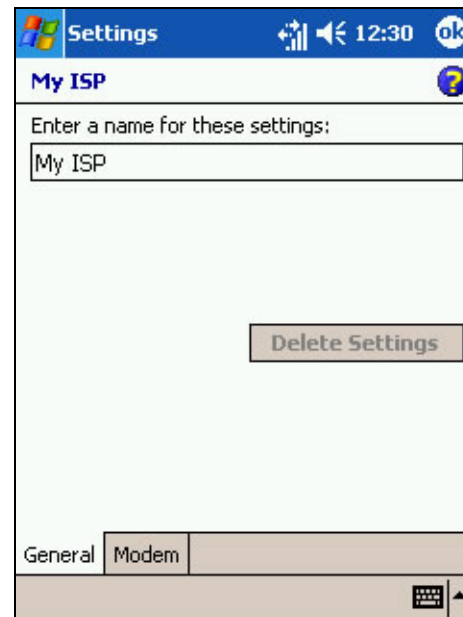
1. Tap Start > Settings > Connections tab > Connections.



2. Under My ISP or My Work Network, tap Manage existing connections.



3. Tap the General tab.

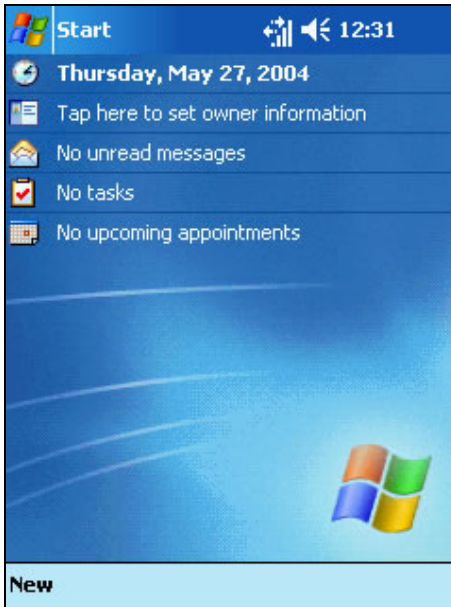


4. Enter a name for the settings.

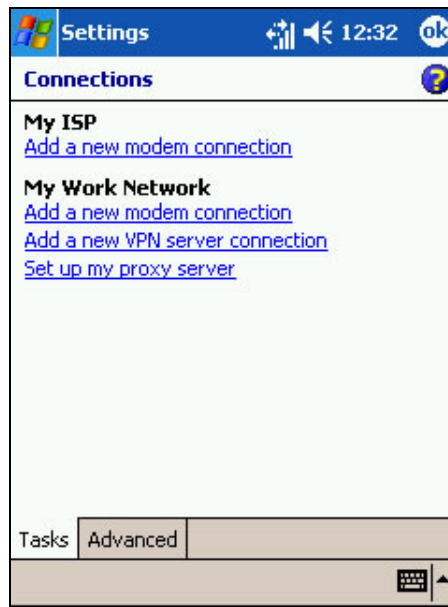
## Internet:

### How to set up a WAP gateway

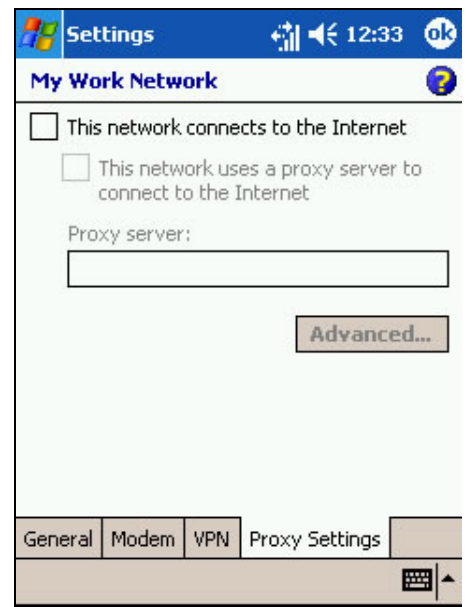
To access WAP sites through Pocket Internet Explorer, configure your device to use a WAP gateway. Use the following steps to create a new set of connections to the Internet with WAP gateway settings. Viewing WAP sites is not supported on all devices.



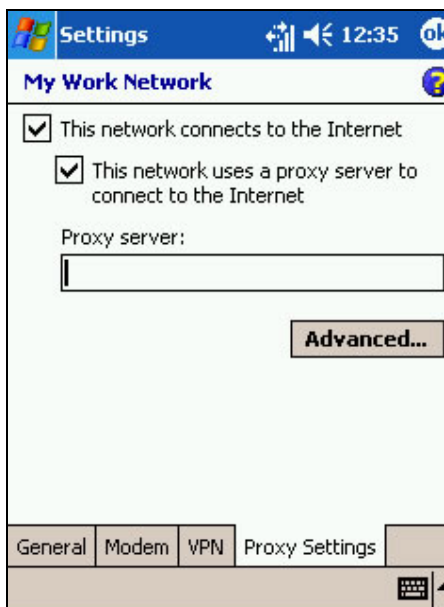
1. Get the following information from your ISP: ISP server phone number, user name, and password. Also, contact your mobile phone service provider and ask for your WAP gateway server name and port number.



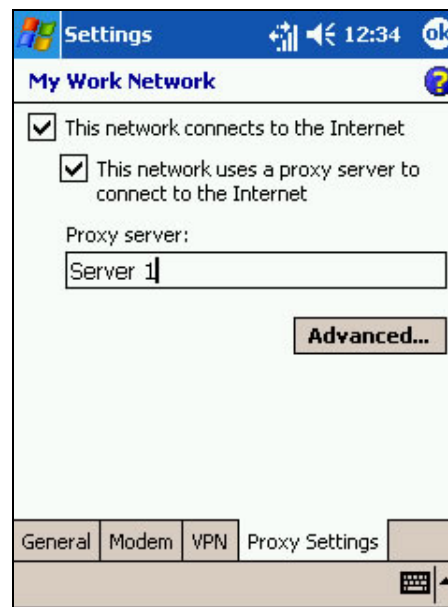
2. Tap Start > Settings > Connections tab > Connections > Tasks tab.



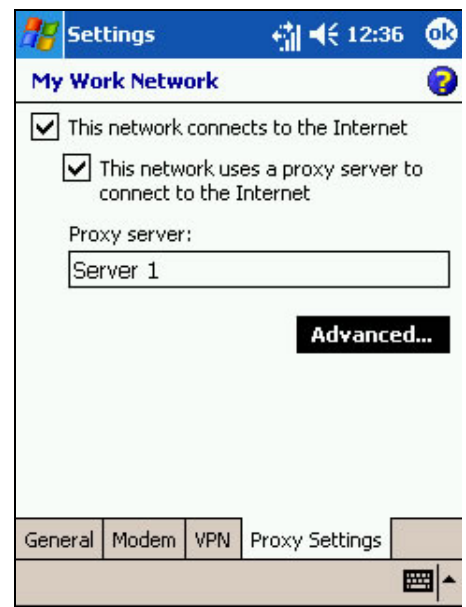
3. Tap Edit my proxy server. If a proxy server has not been set up, tap Set up my proxy server.



4. On the Proxy Settings tab, select This network connects to the Internet and This network uses a proxy server to connect to the Internet.



5. If necessary, in the Proxy server box, enter the proxy server name.

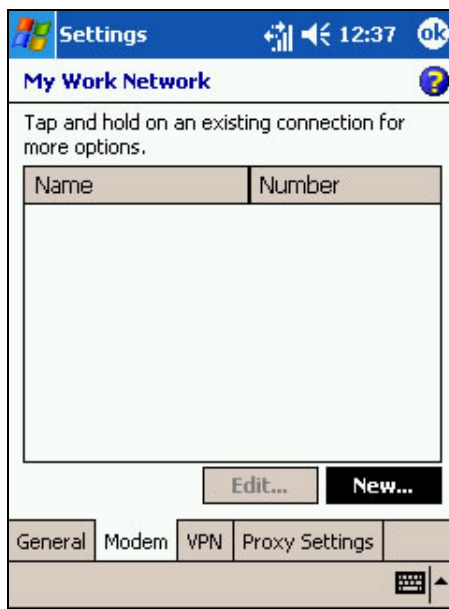


6. Tap Advanced.

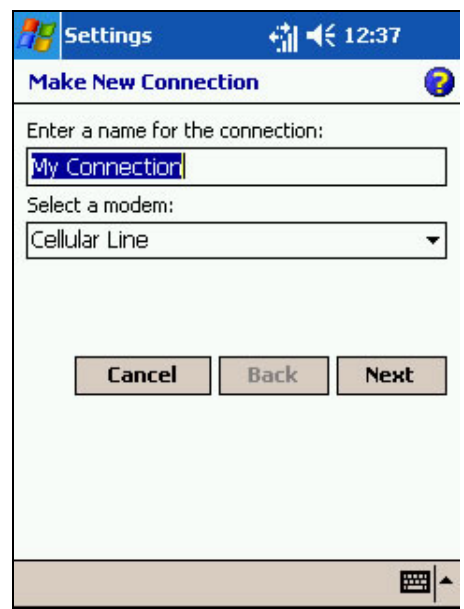




7. In the WAP box, enter the WAP gateway server name. Under Port, enter the port number. The most common WAP port number is 9201.



8. Create a modem connection. Also, if necessary, set dialing rules.

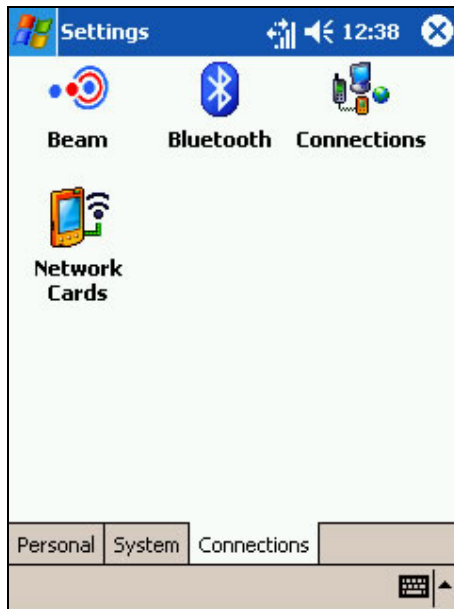


9. If your device does not have a connection to a mobile phone network, insert a modem card. If your device does not have a connection to a mobile phone network, insert a modem card.

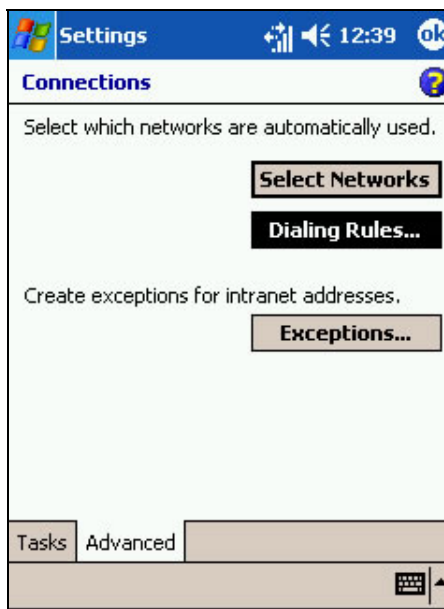
## Internet:

### How to use dialing rules

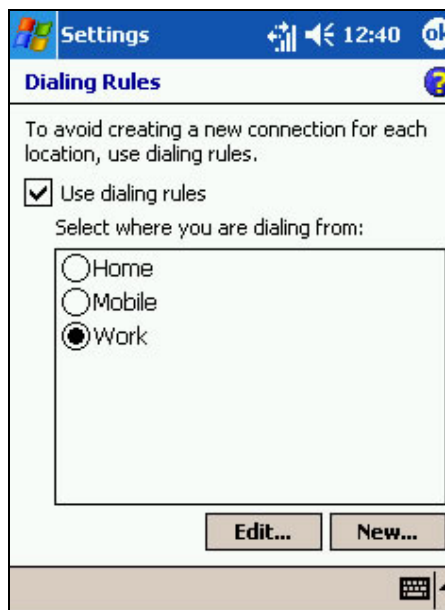
Additional numbers may need to be dialed, depending on your given location when connecting. For example, when dialing from work, a 9 prefix must often be dialed, or an area code is needed. To avoid creating a new modem connection for each situation, set dialing rules for the locations from which you often connect. Three dialing locations, Home, Mobile, and Work, have been created for you, and you can create more. If a connection cannot be made, your device will give you an opportunity to change the dialing location.



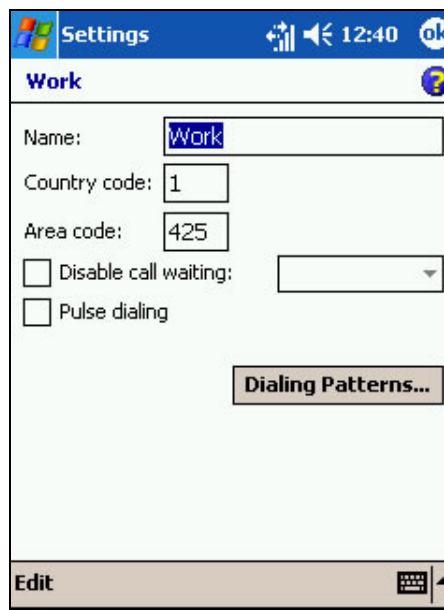
1. Tap Start > Settings > Connections tab.



2. Tap Connections > Advanced tab > Dialing Rules.



3. Tap Use dialing rules.

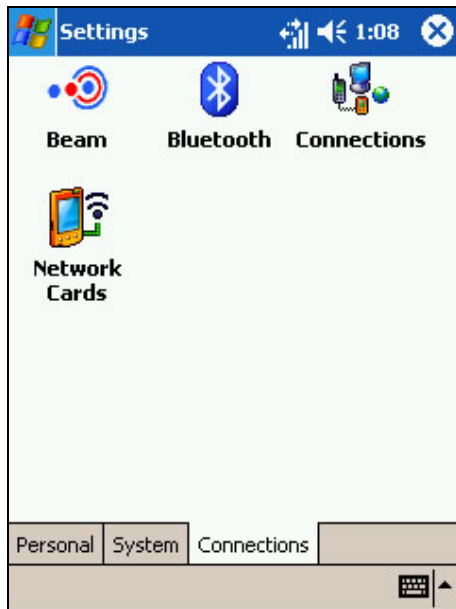


4. Select a location.

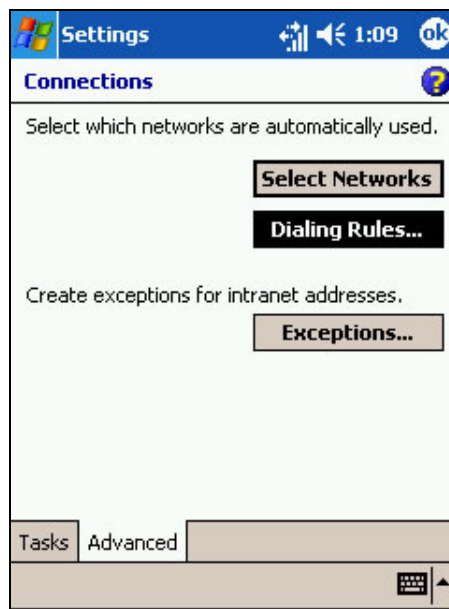
**Tip:** To create a new location, tap New and follow the directions on the screen.

## Internet:

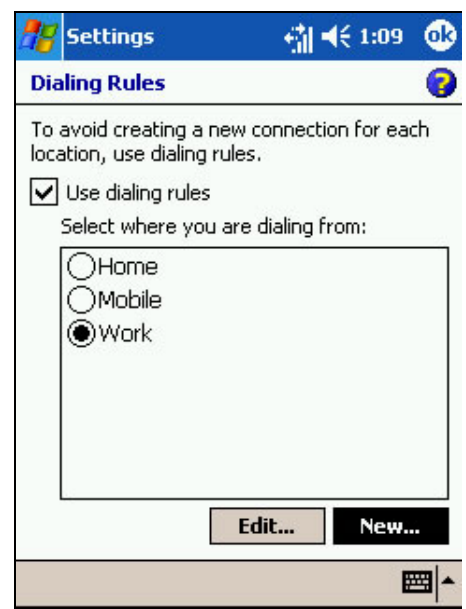
### How to add a dialing location



1. Tap Start > Settings > Connections tab.



2. Tap Connections > Advanced tab > Dialing Rules.



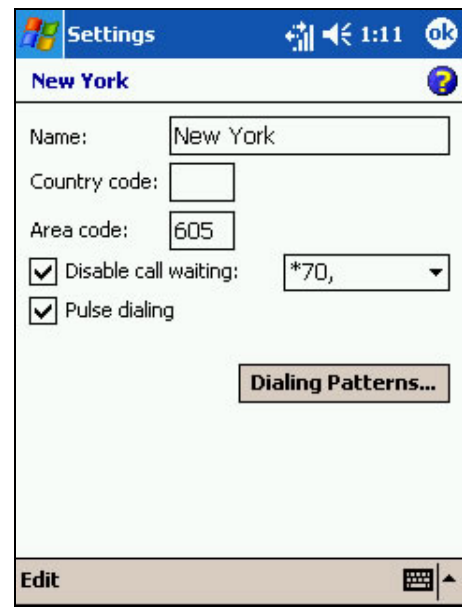
3. Tap New.



4. In the Name box, enter a location name, for example, New York. Enter or edit the area code and country code.



5. If you have a pulse phone line, select Pulse. Most phone lines are tone.



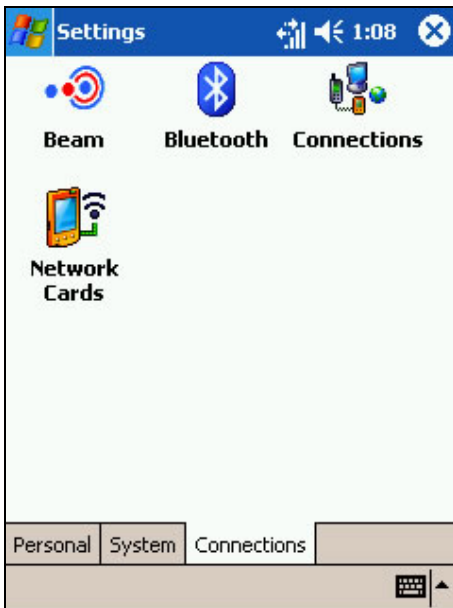
6. To automatically disable call waiting, select Disable call waiting. Then, tap the appropriate number sequence in the list, or enter a new sequence.

**Tip:** To change how the number is dialed, tap Dialing Patterns. For example, enter dialing patterns that will set your device to always dial the number as long distance, or to first dial a 9.

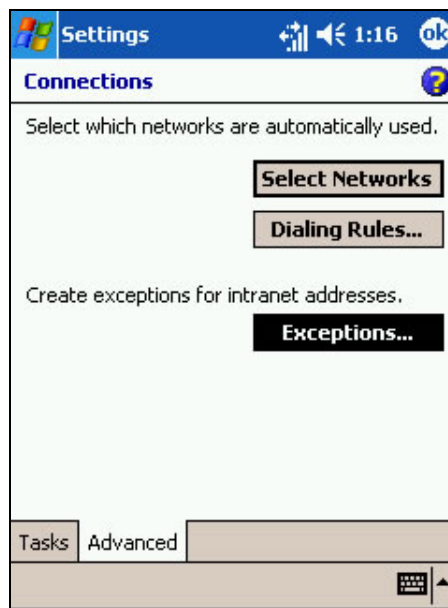
## Internet:

### How to add a work URL exception

To view intranet URLs that use periods (e.g. intranet.companyname.com) in Pocket Internet Explorer, add them to the Work URL Exceptions list.



1. Tap Start > Settings > Connections tab.



2. Tap Connections > Advanced tab > Exceptions. Tap Add new URL.

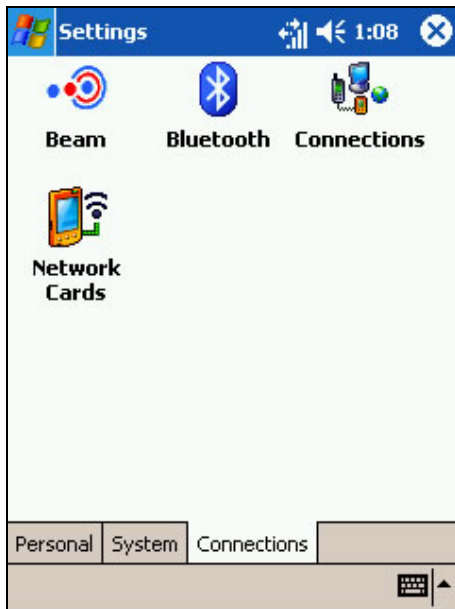


3. In Work URL, enter the intranet URL, for example, intranet.companyname.com.

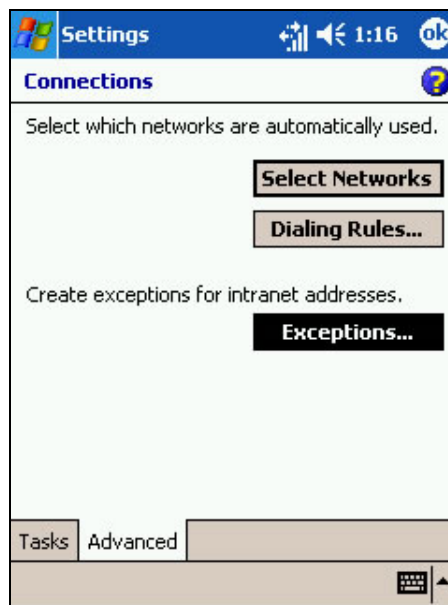
**Tip:** If you use many URLs that have the same company name, you can avoid entering them individually by entering \*.companyname.com.

## Internet:

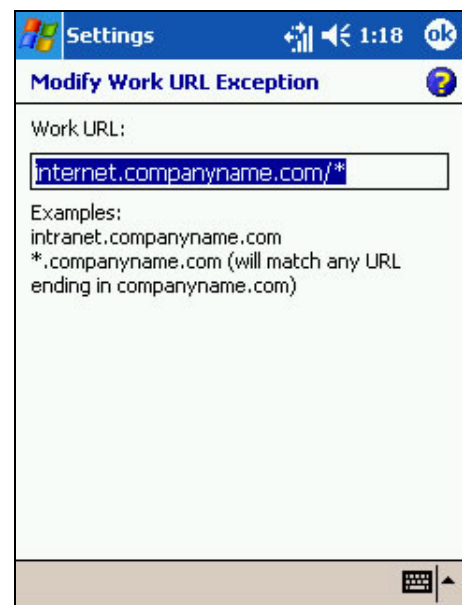
### How to change a work URL exception



1. Tap Start > Settings > Connections tab.



2. Tap Connections > Advanced tab > Exceptions



3. In Work URL, enter the intranet URL, for example, intranet.companyname.com.

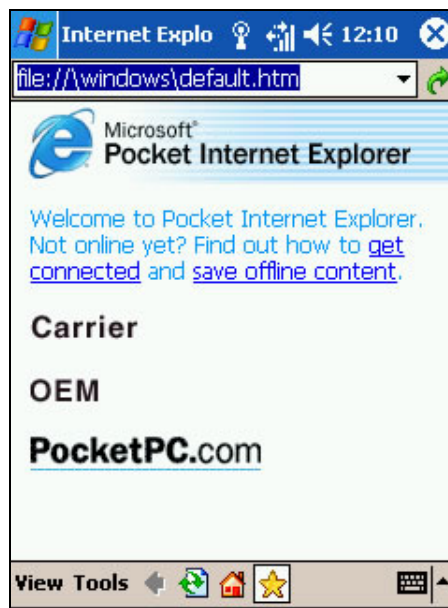
**Tip:** To delete a work URL exception, tap and hold it in the list, and then tap Delete.

## Pocket IE

### How to view favorites



1. If favorite pages are not synchronized using a schedule for synchronization, in Internet Explorer on your PC, click Tools > Synchronize.



2. On your device, tap Favorites.



3. Tap the page that you want to view.

**Tip:** If a favorite link is dimmed or you get a message that the page is not available, you must download the page to your device through synchronization or connect to the Internet.

To prevent pictures from downloading, tap View > Show Images.

To download just one picture, connect to the Internet or intranet, tap and hold the picture's placeholder, and then tap Show Picture.



## Pocket IE:

### How to view page properties

1. Tap View > Properties. The size, security type, and full address of the current page is displayed.



## Pocket IE:

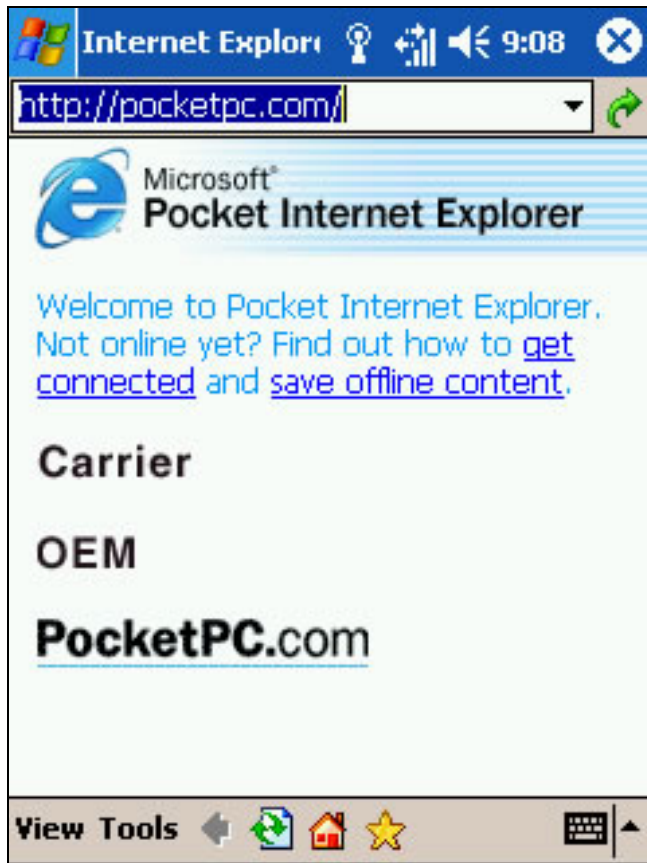
### How to view the History list

1. Tap View > History.
  - To view a page, tap it.
  - To change the information displayed in the History list, tap the sort list (labeled Page Title by default).
  - To change the number of days of links stored in the History list or to clear the History list, tap Tools > Options > Memory tab.

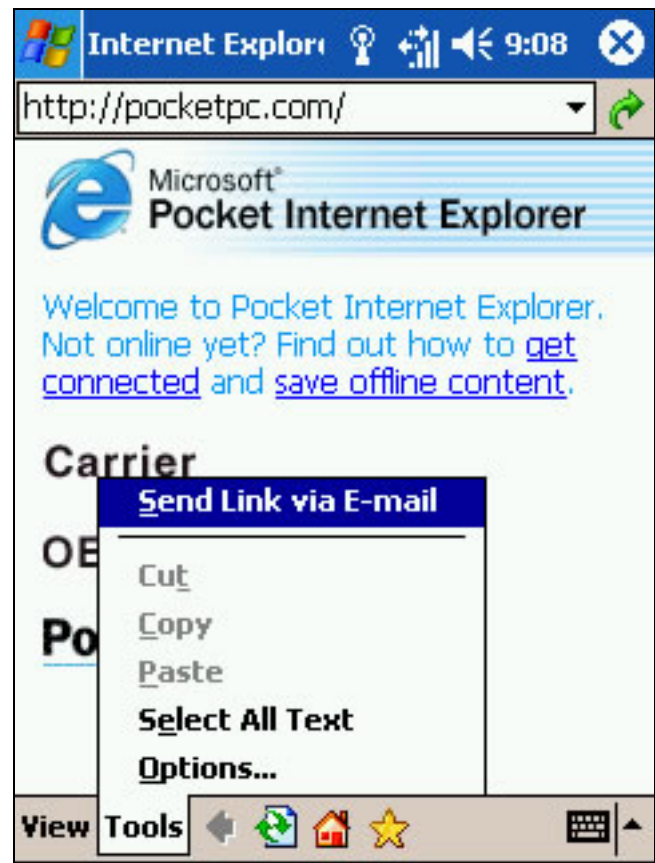


## Pocket IE:

### How to send a Link via E-mail



1. Go to the page you want to send.



2. Tap Tools > Send Link via E-mail. A new message is created with the page address inserted in the message body.

## Pocket IE:

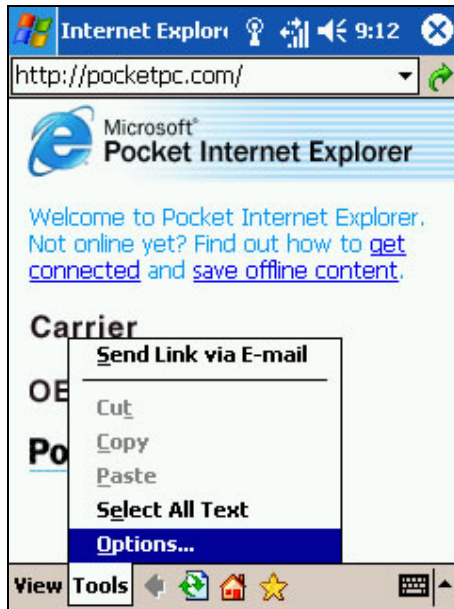
### How to change the text size

1. Tap View > Text Size, and select the desired size.

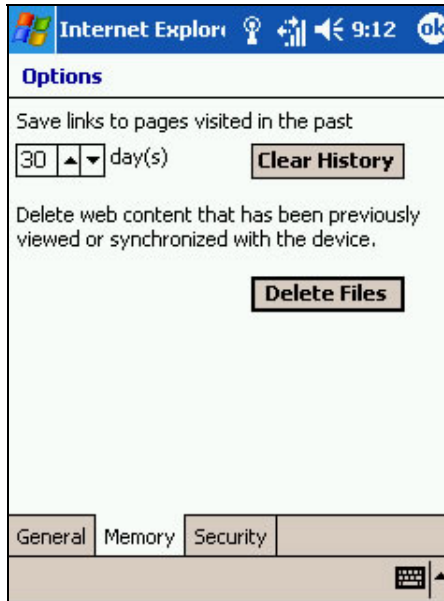


# Pocket IE:

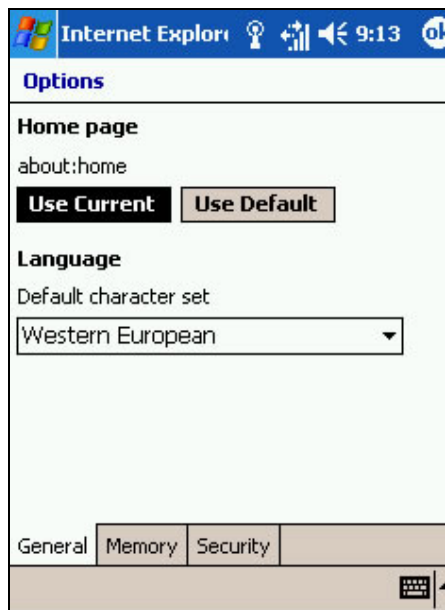
## How to change options



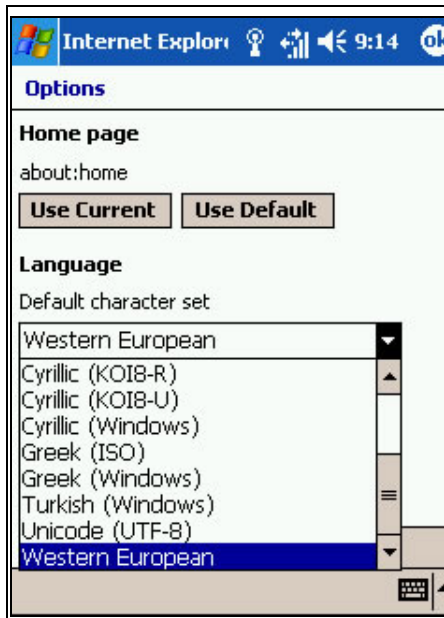
1. Tap Tools > Options.



2. To free storage space, in the Memory tab, tap Delete Files. All pages stored on your device, including offline favorites content, will be deleted. To further save space, tap Clear History. All cached links will be deleted.



3. To change your default Home page to the present page you are viewing, in the General tab, tap Use Current.



4. To more easily view text in a different language, in the General tab, from the Default character set list, select a different character set.

# Pocket IE:

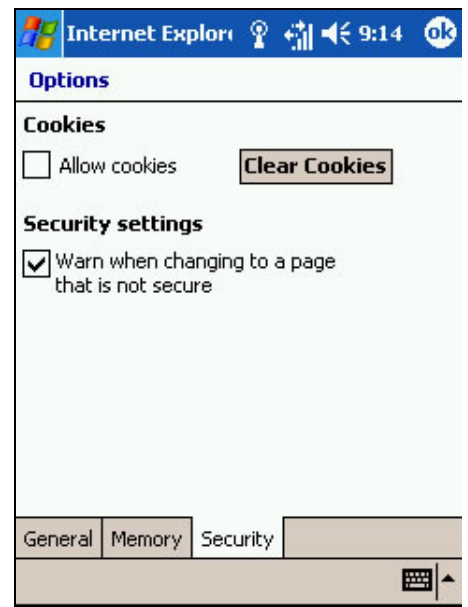
## How to change security options



1. Pocket Internet Explorer supports the protocols used by Secure Sockets Layer (SSL). A connection that uses SSL helps you to send personal information safely. To determine if a connection uses SSL, tap View > Properties.



2. To change security settings, tap Tools > Options > Security tab.



3. Cookies contain information about your identity and preferences so that a page can tailor information to your needs. The page sends the file, and it is stored on your mobile device. You can prevent Pocket Internet Explorer from accepting any cookies by clearing Allow cookies.



# Pocket IE:

## How to add a favorite link



1. Go to the page you want to add.



2. Tap and hold on the page and tap Add to Favorites.

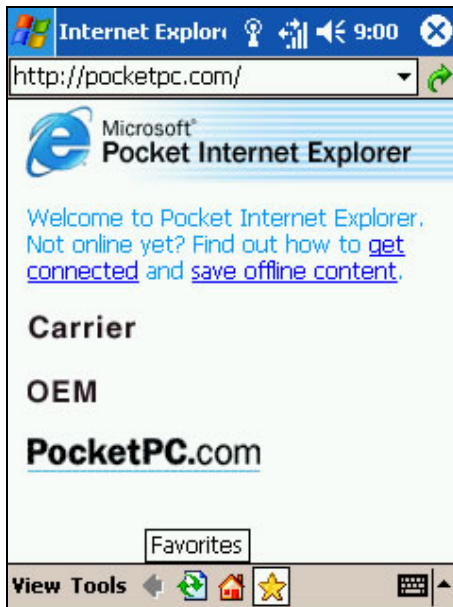


3. Confirm or change the name and select a folder to store the favorite in.

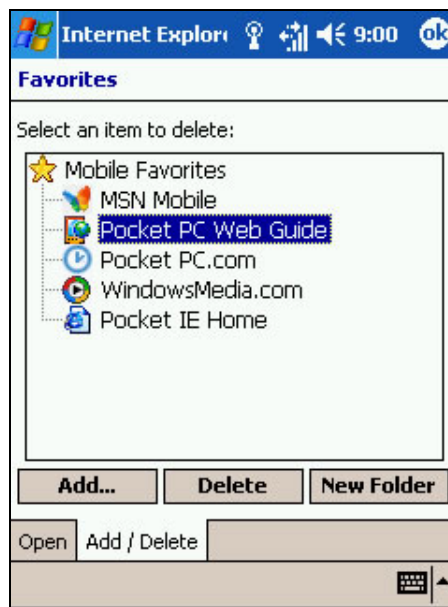
**Tip:** To create a folder, tap Favorites. On the Add/Delete tab, tap New Folder. Enter a name for the folder, and tap Add.

# Pocket IE:

## How to delete a favorite link



1. Tap Favorites.



2. Tap the Add/Delete tab and then select the link you want to delete.



3. Tap Delete.

**Tip:** Only the link to the page is deleted, not the page content stored on your device. To delete the page itself, tap Tools > Options > Memory tab > Delete Files.

## Pocket IE:

### How to fit the page to the screen

Pocket Internet Explorer provides three options to lay out Web pages on the screen. To choose which layout, tap View > Layout and then One Column, Default, or Desktop.



1. The One Column option arranges almost all Web page content into one column that is as wide as the screen. This means that you will almost never have to scroll horizontally, although the page will look different from how it looks on a desktop computer.



2. The Default option maintains a similar layout as on a desktop computer, but it makes items smaller and arranges the content so that you can see most of it without needing to scroll horizontally.



3. The Desktop option keeps the same layout and size as on a desktop computer, which will require both horizontal and vertical scrolling.

## Pocket IE:

### How to synchronize a favorite link

(screenshots not available)

1. In ActiveSync on your PC, click Tools > Options, and select Favorite.
2. In Internet Explorer on your PC, save or move favorite links to the Mobile Favorites subfolder in the Favorites list.
3. Connect your mobile device to your PC. If synchronization does not start automatically, in ActiveSync on your PC, click Sync.

**Tip:** If you add or delete a favorite link in the Mobile Favorites folder on your device, the next time you synchronize, the same change is made on the PC.

## Pocket IE:

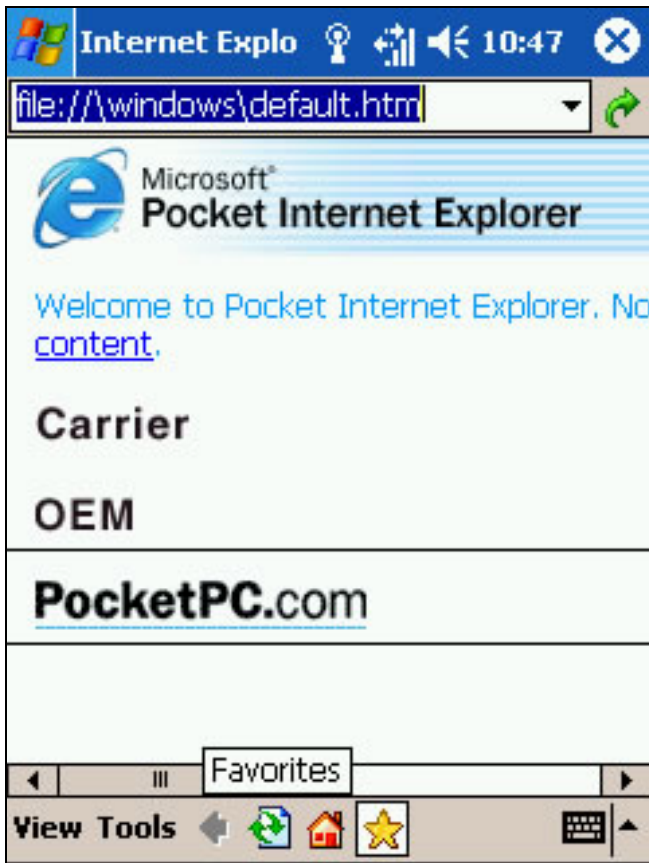
### How to synchronize a mobile favorite

(screenshots not available)

1. In ActiveSync on your PC, click Tools > Options, and select Favorite.
2. In Internet Explorer 5 or greater, browse to the page you want to view offline.
3. Click Tools > Create Mobile Favorite.
4. To change the link name, enter a new name in the Name box.
5. In the Update box, select a desired update schedule to keep the page in the Mobile Favorites folder up to date. You can also update content by clicking Tools > Synchronize in Internet Explorer.
6. To save the link in a subfolder of Mobile Favorites, click Create In and select the desired subfolder.
7. Click OK. Internet Explorer will download the latest version of the page.
8. To download the pages that are linked to the mobile favorite you just created, in Internet Explorer on the desktop computer, right-click the mobile favorite and then click Properties. On the Download tab, specify the number of links deep you want to download. To conserve device memory, only go one level deep.
9. Connect your mobile device to your PC. If synchronization between your device and PC does not start, in ActiveSync on your PC, click Sync.

## Pocket IE:

### How to synchronize an AvantGo channel



1. In Pocket Internet Explorer on your device, tap Favorites to display your list of favorites.
2. Tap the AvantGo Channels link.
3. Tap Activate.
4. Follow the directions on the screen. You will need to synchronize your device with your desktop computer and then tap My Channels to complete the AvantGo setup.
5. When synchronization is complete, tap the AvantGo Channels link in your list of favorites to see a few of the most popular channels.

**Tip:** To add or remove channels, tap the Add or Remove link.



